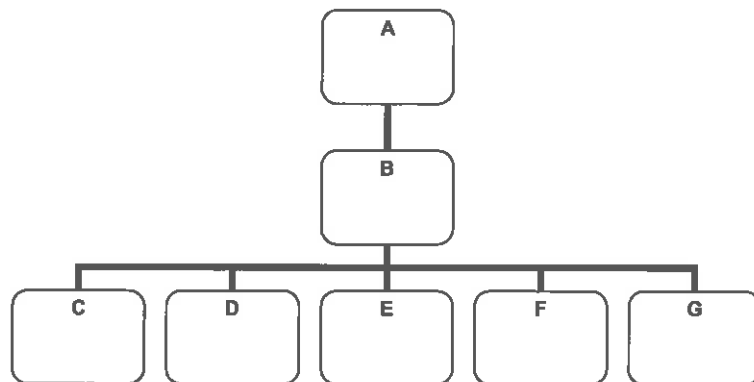


A

General Instructions

You have the following organisation in your group:



- A is only allowed to communicate with B.
- 'C', 'D', 'E', 'F' and 'G' are only allowed to communicate with B.
- No other communication is allowed.
- You are not allowed to show or give this form to anybody during the exercise.
- If you have any questions, please raise your hand.

Instructions for A

Each of you have 5 symbols on your instruction form. 6 different symbols are used in this exercise. Your task is to find which of the 6 symbols you have in common on all instruction sheets.

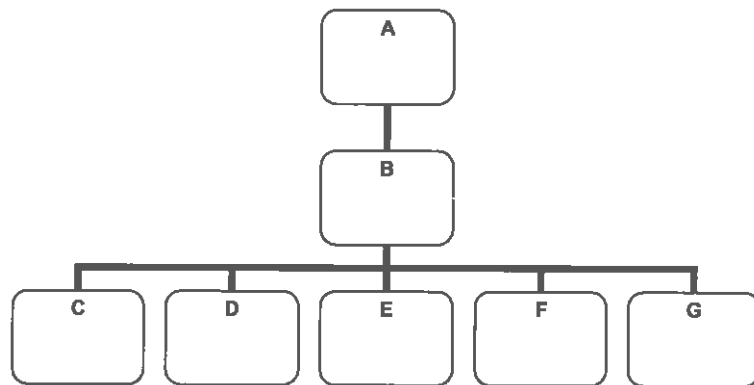
You are only allowed to communicate with B.



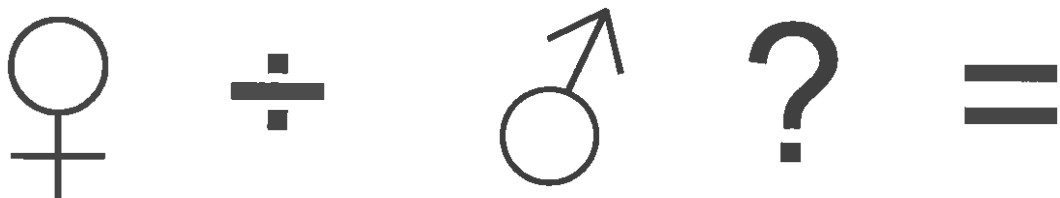
B

General Instructions

You have the following organisation in your group:

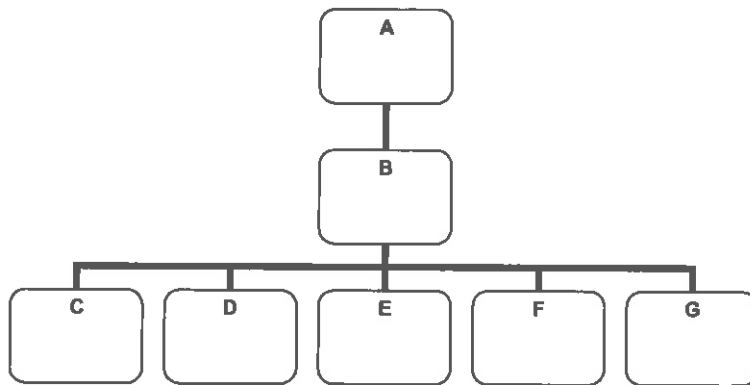


- A is only allowed to communicate with B.
- 'C', 'D', 'E', 'F' and 'G' are only allowed to communicate with B.
- No other communication is allowed.
- You are not allowed to show or give this form to anybody during the exercise.
- If you have any questions, please raise your hand.



General Instructions

You have the following organisation in your group:

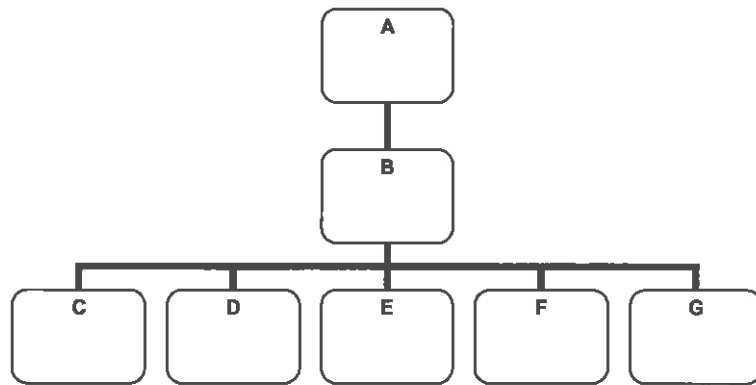


- A is only allowed to communicate with B.
- 'C', 'D', 'E', 'F' and 'G' are only allowed to communicate with B.
- No other communication is allowed.
- You are not allowed to show or give this form to anybody during the exercise.
- If you have any questions, please raise your hand.

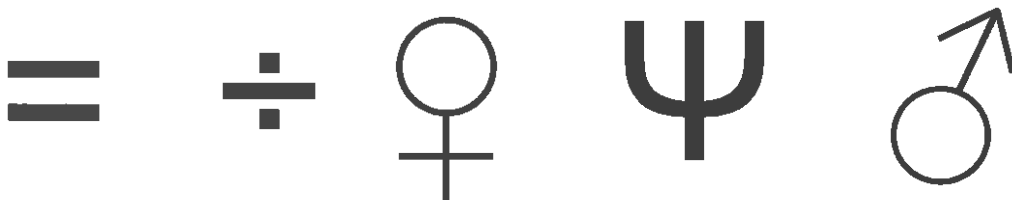


General Instructions

You have the following organisation in your group:

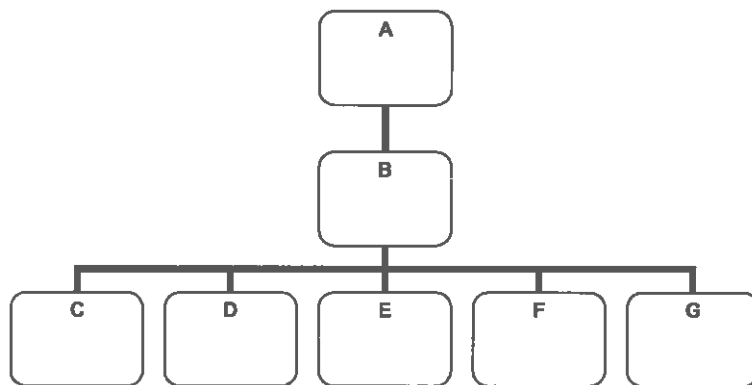


- A is only allowed to communicate with B.
- 'C', 'D', 'E', 'F' and 'G' are only allowed to communicate with B.
- No other communication is allowed.
- You are not allowed to show or give this form to anybody during the exercise.
- If you have any questions, please raise your hand.



General Instructions

You have the following organisation in your group:

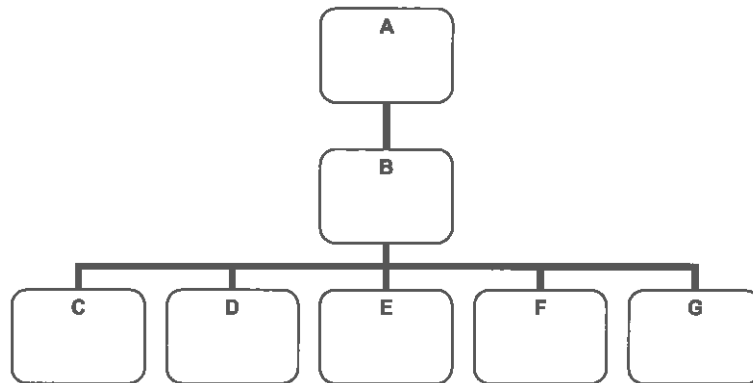


- A is only allowed to communicate with B.
- 'C', 'D', 'E', 'F' and 'G' are only allowed to communicate with B.
- No other communication is allowed.
- You are not allowed to show or give this form to anybody during the exercise.
- If you have any questions, please raise your hand.



General Instructions

You have the following organisation in your group:

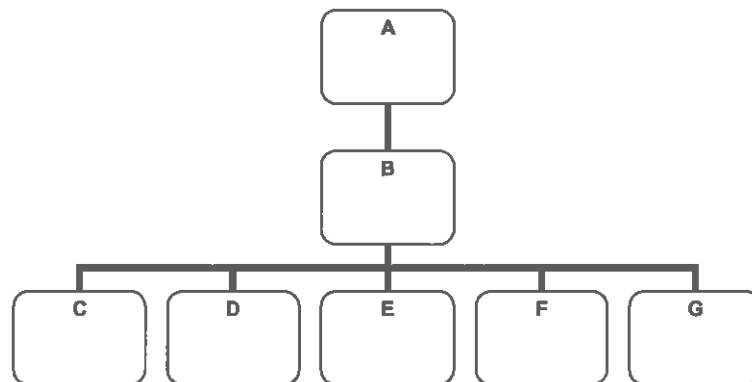


- A is only allowed to communicate with B.
- 'C', 'D', 'E', 'F' and 'G' are only allowed to communicate with B.
- No other communication is allowed.
- You are not allowed to show or give this form to anybody during the exercise.
- If you have any questions, please raise your hand.



General Instructions

You have the following organisation in your group:



- A is only allowed to communicate with B.
- 'C', 'D', 'E', 'F' and 'G' are only allowed to communicate with B.
- No other communication is allowed.
- You are not allowed to show or give this form to anybody during the exercise.
- If you have any questions, please raise your hand.

